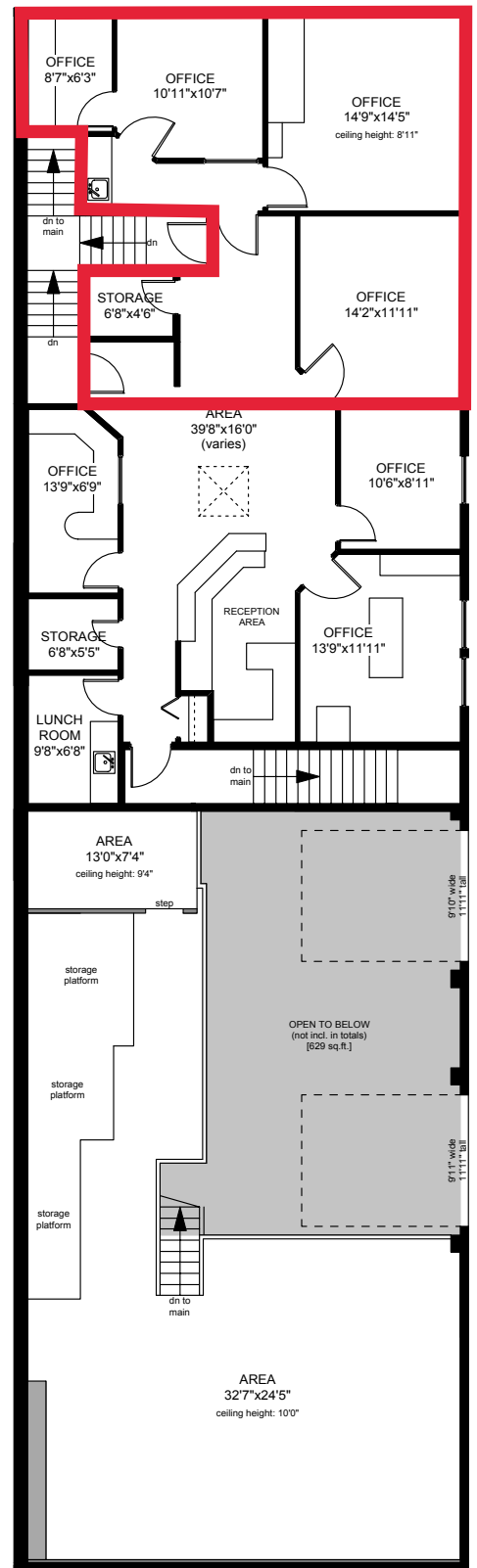
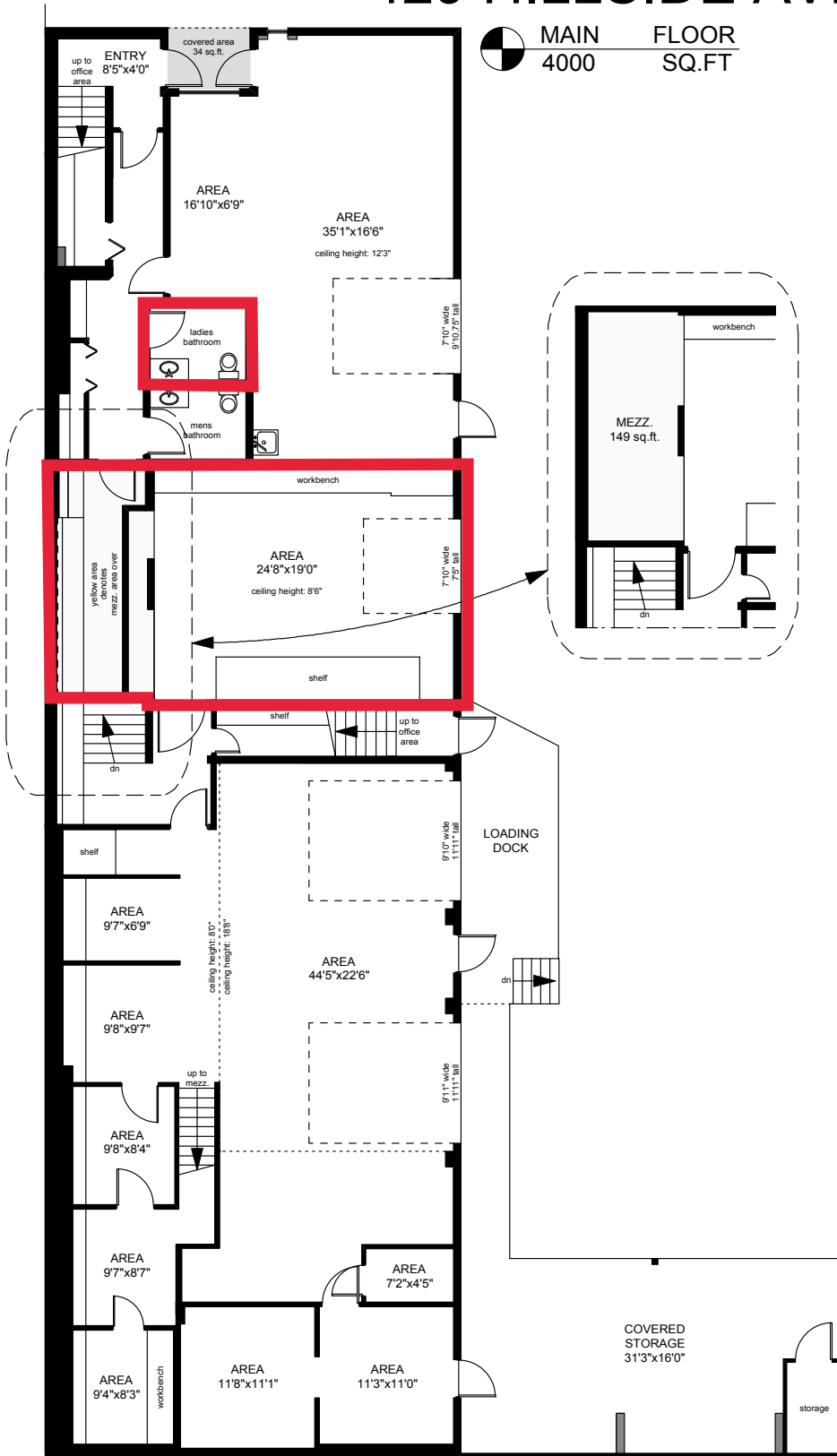


429 HILLSIDE AVENUE

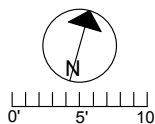
MAIN FLOOR
4000 SQ.FT



UPPER FLOOR
3405 SQ.FT

NOTE: Square footage calculated from outside face of exterior walls

| | FINISHED SQ. FT. | UNFINISHED SQ. FT. | TOTAL SQ. FT. |
|-----------------|------------------|--------------------|---------------|
| MAIN | 449 | 3551 | 4000 |
| UPPER | 2072 | 1333 | 3405 |
| TOTAL | 2521 | 4884 | 7405 |
| mezzanine | 0 | 149 | 149 |
| loading dock | 0 | 173 | 173 |
| covered storage | 0 | 501 | 501 |



PREPARED FOR THE EXCLUSIVE USE OF
SKEEN HOLDINGS LTD.

MEASURED ON: 07/28/15
DRAWING FILE: 12990

Tafe Measure VICTORIA, B.C.
Ph. 883.8894
www.tafemeasure.com